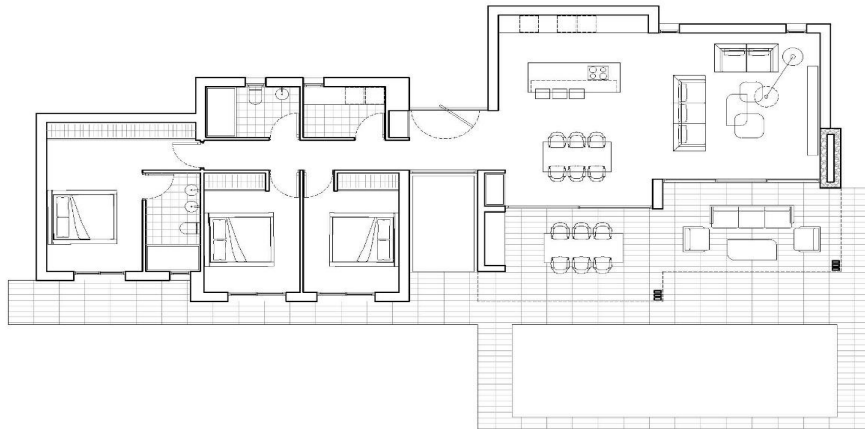


MRG97708E



Superficies	Construidas
PLANTA BAJA	139.61m <sup>2</sup>
VIVIENDA	32.37m <sup>2</sup>
PORCHE	
TERRAZA	62.28m <sup>2</sup>
PISCINA	29.50m <sup>2</sup>

PLANTA BAJA  
E: 17/159

## NEW BUILD VILLA IN CALPE

€1,190,000



3



2



139m<sup>2</sup>



742m<sup>2</sup>



**NEW BUILD VILLA IN CALPE** New Build villa located in one of the residential areas preferred by all the residents of Calpe, due to its proximity to the town centre, the beaches and at the same time because it is a quiet but safe area, as it is located on the outskirts of the town centre. The property has been planned on a single floor, which makes this project practical and comfortable. The whole plot is fenced and has a hedge of cypress trees inside, which provides privacy and a pleasant environment. From the main entrance to the house...(Ask for More Details!)