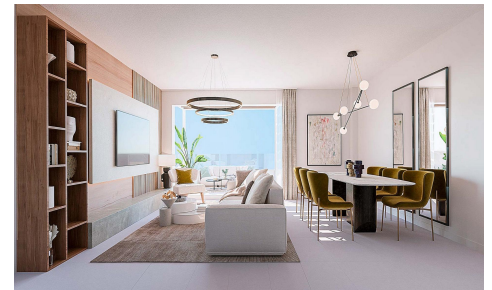


MRG93675R



LUXURY URBANISATION WITH SEA VIEWS IN BENALMÁDENA



2



2



103m²



N/A



Exclusive private urbanisation, with a privileged location in Benalmádena. Due to its elevated location on the slope of the land, each and every one of the 2 and 3 bedroom properties, and 2 townhouses, enjoy incredible views of the sea and the coast. Underfloor heating, aerothermics, armoured door, and lift. Large terraces, bright penthouses and townhouses with private gardens, to experience nature from every corner of your home. Spacious rooms blend into the same environment. Natural light illuminates your bedroom to start the day with the best energy and possibility and all the possibilities. Closed urbanization with communal swimming pool with saline chlorination, spacious green areas. ...(Ask for More Details!)