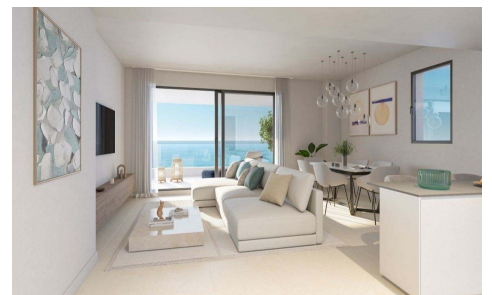
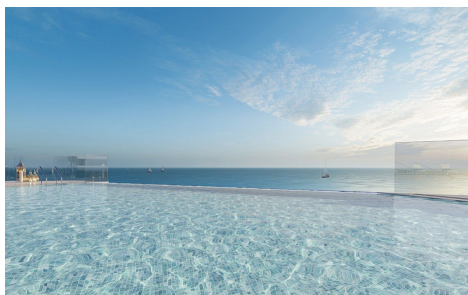


IM78902A



Penthouse in Benalmadena Costa

€532,000



2



2



112m²



N/A



Wake up every day to breathtaking sea views in a bright, spacious home designed for comfort and relaxation. This exclusive development features 74 stylish 2- and 3-bedroom residences, each with expansive terraces, lush gardens, and a sparkling communal pool—perfect for unwinding in a serene coastal setting. Nestled in Torremuelle, Benalmádena, just minutes from the beach, this prime location offers seamless connections to the Mediterranean motorway and the RENFE Cercanías train station. Enjoy the best of both worlds—peaceful green surroundings with easy access to the vibrant towns of Fuengirola and Benalmádena. With unbeatable sea views, spacious layouts, and an exceptional natural setting, this is the perfect retreat. Don't miss...(Ask for More