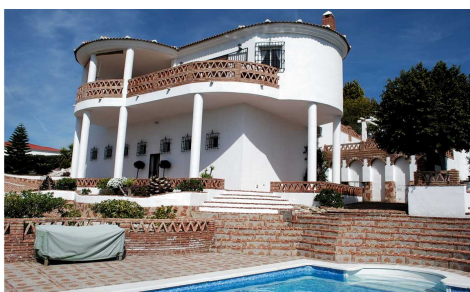


MLS87344M



Villa in Vinuela

€420,000



3



3



240m²



1,000m²



Villa Rustica is conveniently located in an elevated position in between Puente Don Manuel and Vinuela. An impressive looking property which consists of three bedrooms and three bathrooms on the main living level. There is an independent kitchen which is fully fitted with integrated units and a spacious lounge which has access on to the front balcony terrace. There is AC throughout plus a wood burner in the lounge. Via an internal staircase you may access a lower level which has a utility room, work room with water reserve, plus a large double garage with access via a gated entrance from the main street. The landscaping on this property is...(Ask for More Details!)